

Science for Citizens II

Forensics Assignment 2: Analyze a Case

Your job is to read through this document and analyze all of the photos and try to determine what may have happened here. You will then record all of your findings on the Word Document linked to Ms. Grant's website.

As a bloodstain pattern analyst you have been called to the following scene by the police investigator. The police were called when the apartment caretaker found the following blood patterns in the building and specifically, within suite 203. The resident in suite 203 cannot be located and it is not known who the victim is or what the person's injuries might be.

Keep the following questions in mind as you study the case:

Where was the victim initially attacked?

What was the victim's position during the attack?

What type of force created the bloodstains?

Where/what do you think their injuries might be?

As you enter the building you look up the staircase and see the following:



You turn right to continue up the stairs and see more blood on the walls:

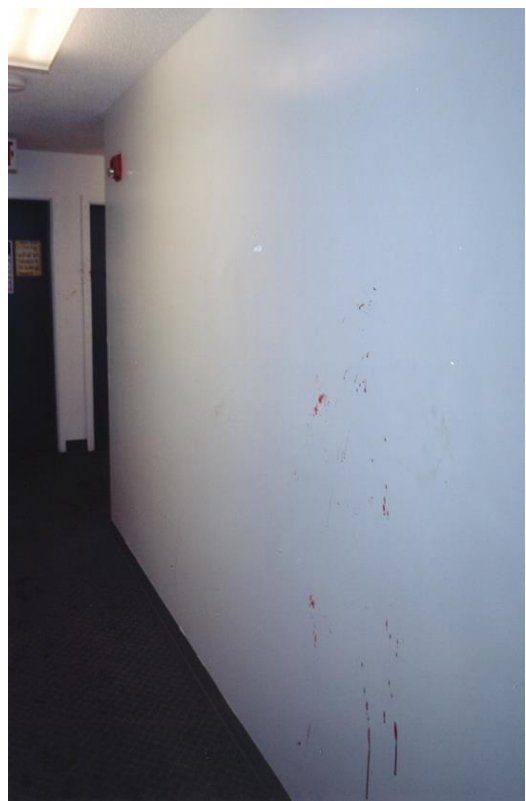
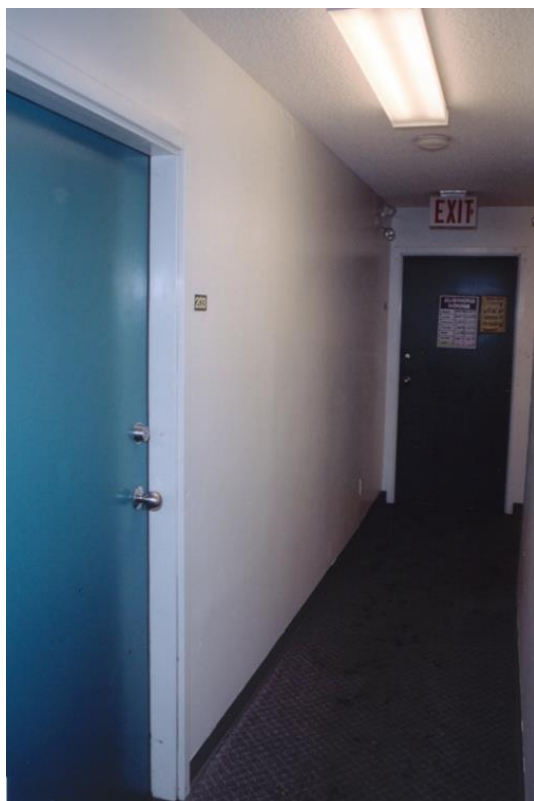


You continue up the stairs and enter into the second floor hallway at the door marked "Exit". You then turn to the right and walk towards suite 203, passing bloodstains on the door and frame to suite 201:





You then come upon suite 203 and you see that there are blood stains on the wall across the hall.



You then enter suite 203 and observe bloodstains on the back of the door, on the wall to the left of the door, above the stove and on the upper bedroom door frame.



This is a close up of the bloodstains seen on the wall to the left of the door:



This is a close up of the stains seen on the stove, near the bedroom door.

